

Appendix C: Using maps and data

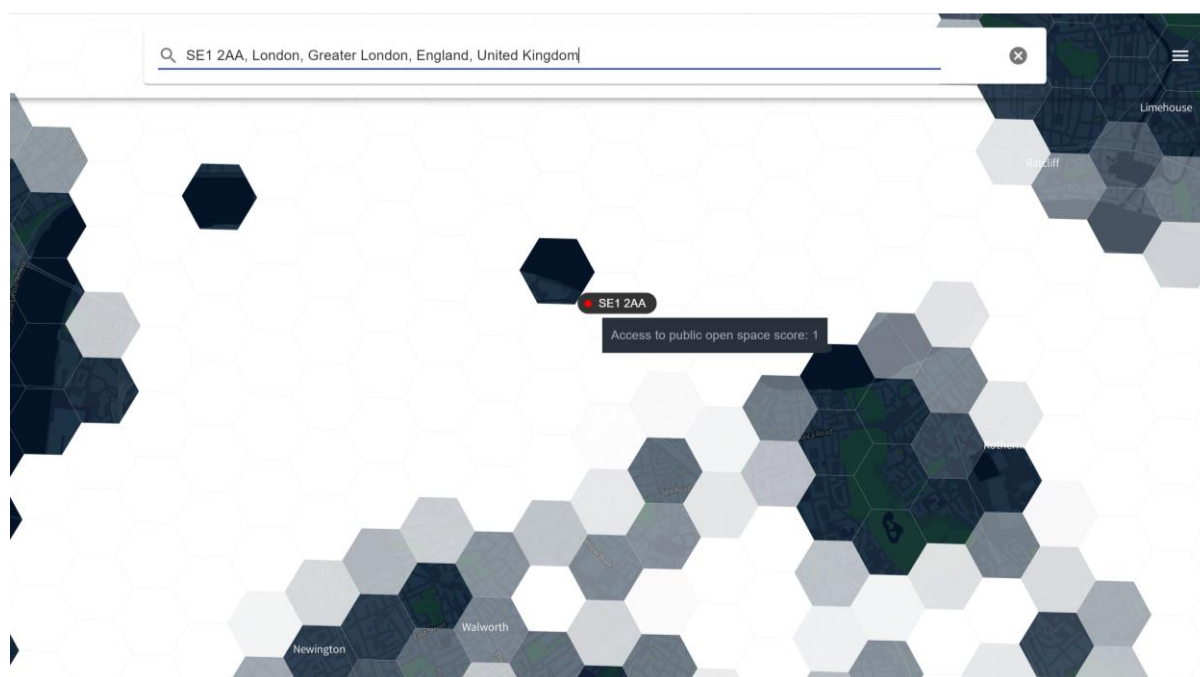
1. Using the Green Infrastructure Focus Map

The Grow Back Greener Fund will prioritise projects that are in areas of the city that have poorer access to green space. You can use our Green Infrastructure Focus Map to find out what proportion of households around your project location are deficient in access to open space. You will be asked to provide this information as part of your application.

There are two ways to access this information, using our simple Access to Open Space Score map, or using the full Green Infrastructure Focus Map. Whilst the Access to Open Space map will simply provide the relevant score for your location, the Green Infrastructure Focus Map allows you to view a wide range of other environmental and social information.

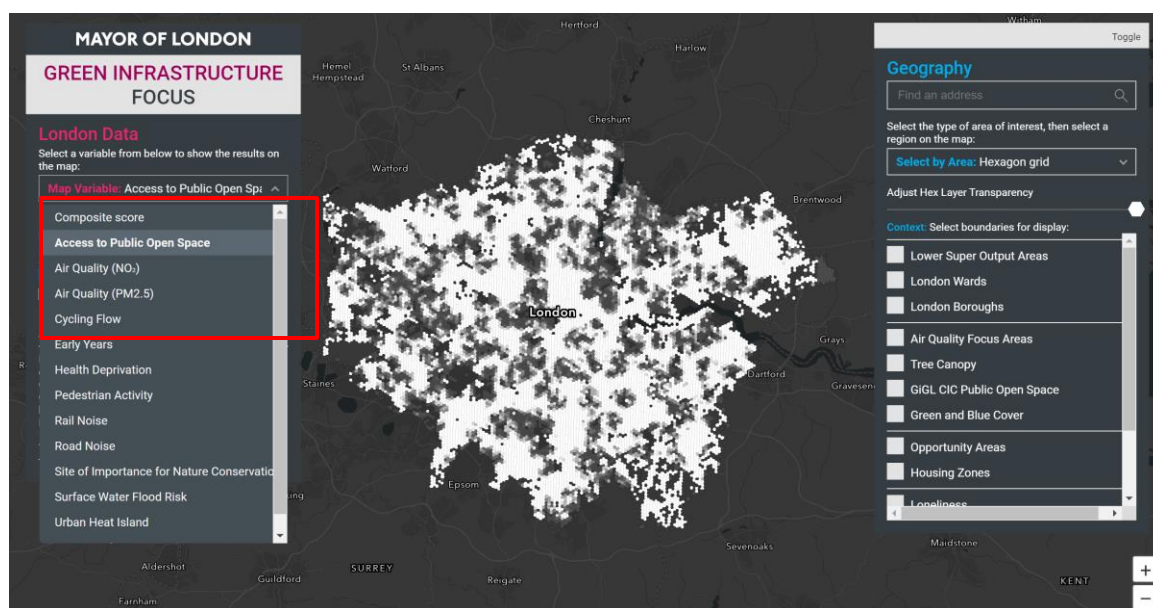
1.1. *Using the Access to Open Space Score map*

- i. Go to the map at <https://maps.london.gov.uk/aod/>. The map now shows the Access to Public Open Space score for each “hex” area. The white areas show where access to public open space is worst, and the dark grey areas show where access is best. Some areas are coloured black, showing no data, because there are no households located here (this includes some large green spaces).
- ii. Type your project postcode or address in the search bar at the top of the page and press enter.
- iii. The map will zoom in and navigate to your chosen address, displaying a red dot at the location. Hovering your mouse over the dot will display the Access to Open Space score for your location (see image below). The score will be between 0 and 1, and represents the proportion of households within the hex that are located in an area of deficiency of access to local and district public open space (AoD). A score of 1 means that all households are in an AoD, whereas a score of 0.5 means that half of the households are in an AoD. Some locations that are in larger green spaces may display no data if the hex contains no households. In this case you may wish to navigate to a neighbouring hex.

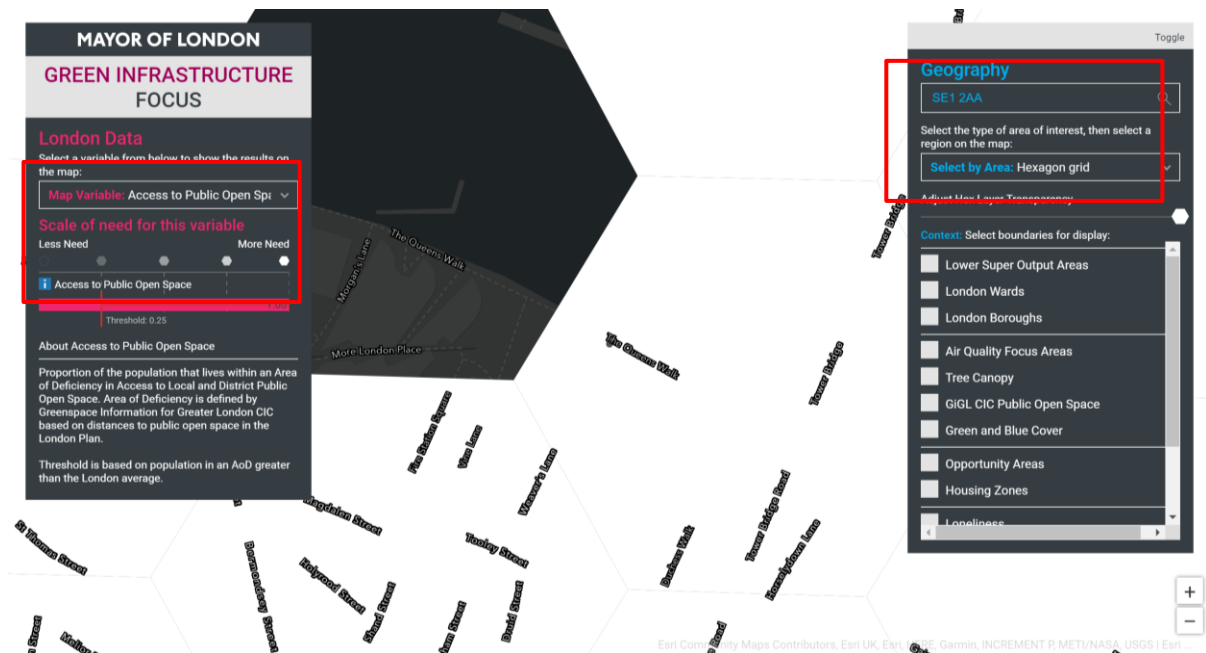


1.2. Using the Green Infrastructure Focus map

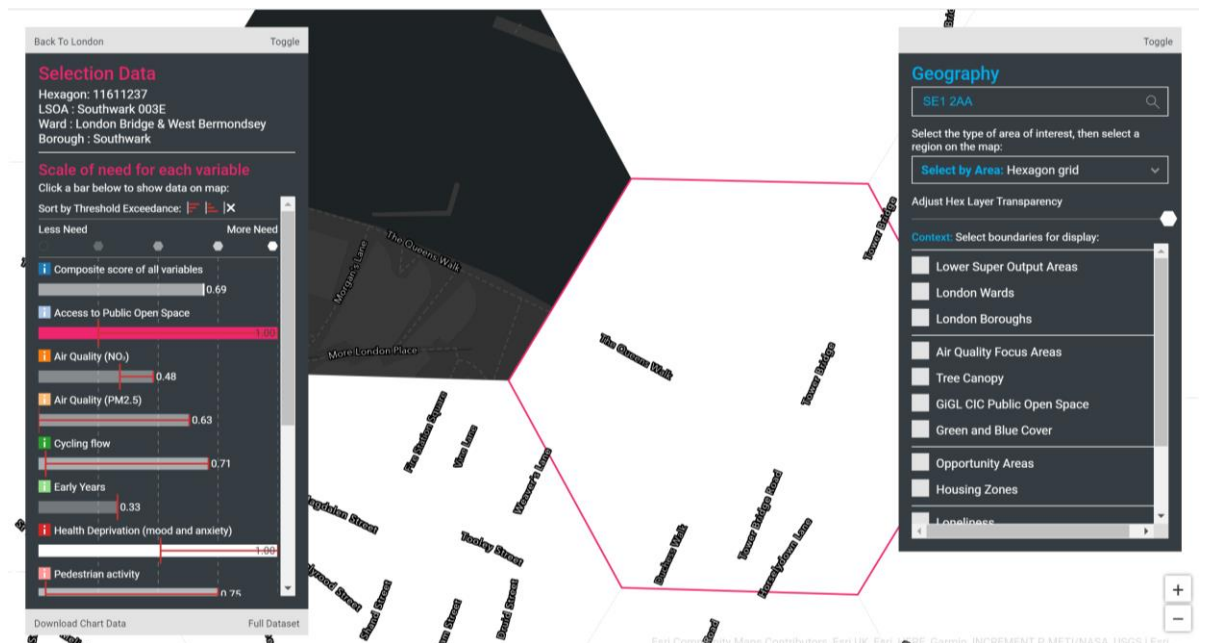
- i. Go to the Green Infrastructure Focus Map at <https://maps.london.gov.uk/green-infrastructure/>. The map works best on a computer rather than a mobile phone.
- ii. On the menu on the left-hand side of the screen, click on the “Map Variable” drop-down menu, and click on “Access to Public Open Space”. The map now shows the Access to Public Open Space score for each area. The white areas show where access to public open space is worst, and the dark grey areas show where access is best. Some areas are coloured black, showing no data, because there are no households located here (this includes some large green spaces).



- iii. In the search box in the top right-hand corner of the map, type the address or postcode for your project location and press enter. The map will navigate to the relevant location. Hovering over the hex that contains your location will display the Access to Public Open Space score for your site in the menu on the left-hand side. The score will be between 0 and 1, and represents the proportion of households within the hex that are located in an area of deficiency of access to local and district public open space (AoD). A score of 1 means that all households are in an AoD, whereas a score of 0.5 means that half of the households are in an AoD. Some locations that are in larger green spaces may display no data if the hex contains no households. In this case you may wish to navigate to a neighbouring hex. You can also adjust the hex layer transparency to make it easier to see the underlying map.



- iv. By clicking on the hex, you can bring up the full range of variables for this location. This data can provide further information to help provide evidence of the need for your project, or to inform your choice of project. For example, the data may highlight poor air quality, health deprivation, or surface water flood risk.



2. Using the London Climate Risk Mapping

The climate adaptation and water theme of Grow Back Greener Fund seeks to prioritise projects that can benefit people in areas of London with high levels of climate exposure and vulnerability. You can use our Climate Risk Maps to find out about how your area is affected by these factors. You will be asked to refer this information as part of your application.

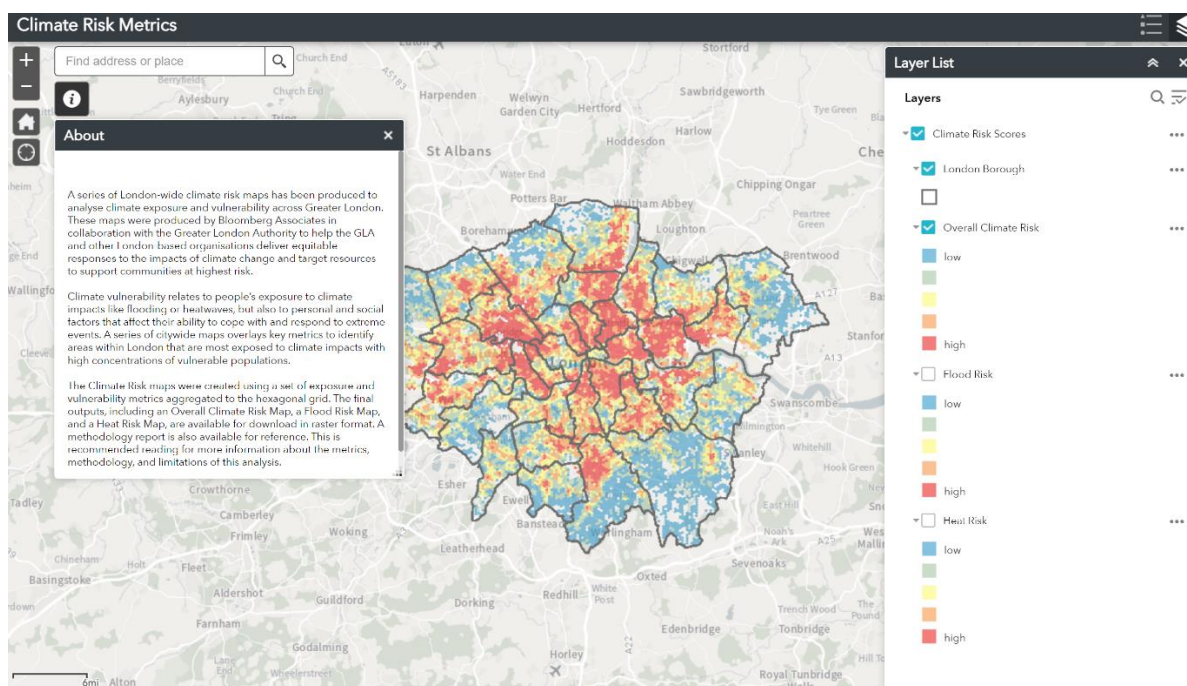
Climate vulnerability relates to people's exposure to climate impacts like flooding and heatwaves, but also to the personal and social factors that affect their ability to cope with and respond to extreme events. High climate risk coincides with areas of income and health inequalities. A series of citywide maps overlays key metrics to identify areas within London that are most exposed to climate impacts (heat and surface water flood risk) with high concentrations of vulnerable populations.

2.1. Using the Climate Risk Maps

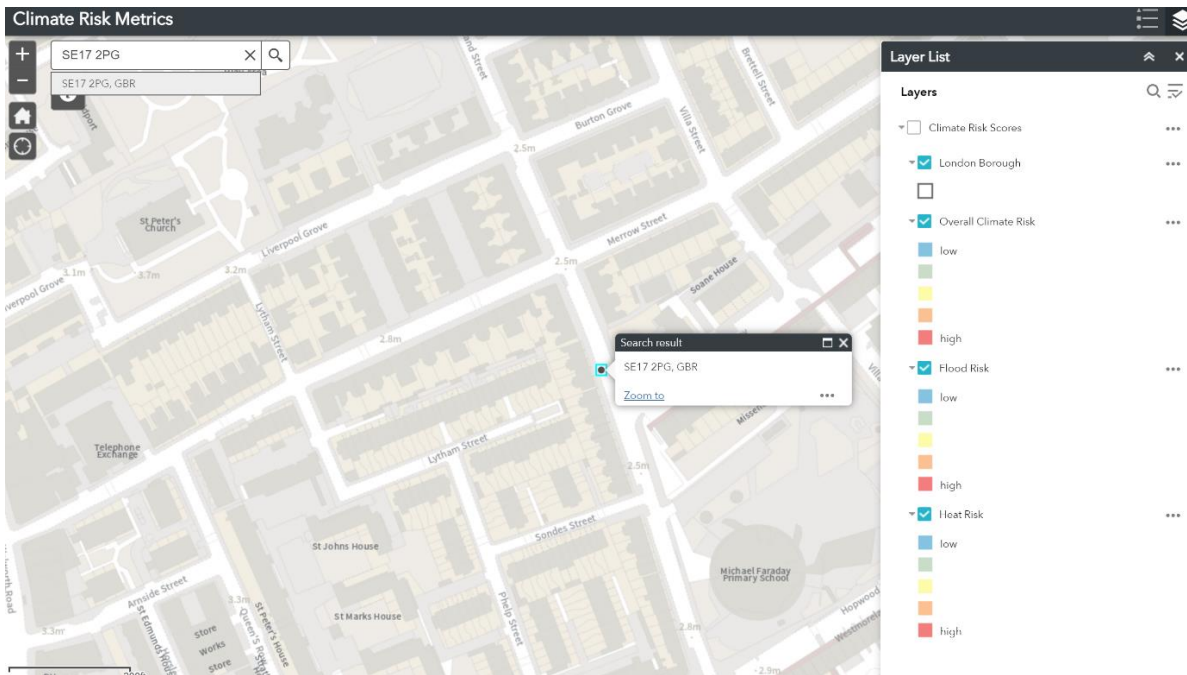
Go to the Climate Risk Maps on the London datastore:
<https://data.london.gov.uk/dataset/climate-risk-mapping>

There, you will find a link to the interactive maps and a methodology document explaining the metrics and methodology.

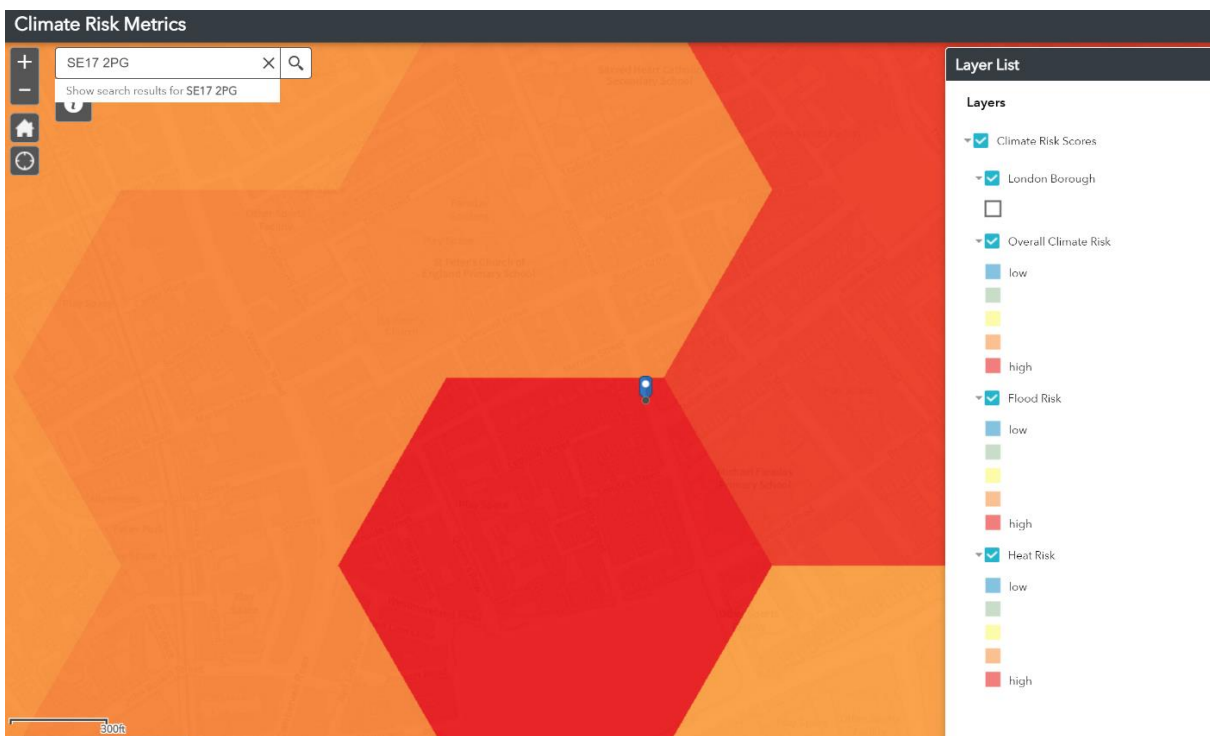
- i. Click on the interactive map. The map will show the climate risk score for each "hex" area.



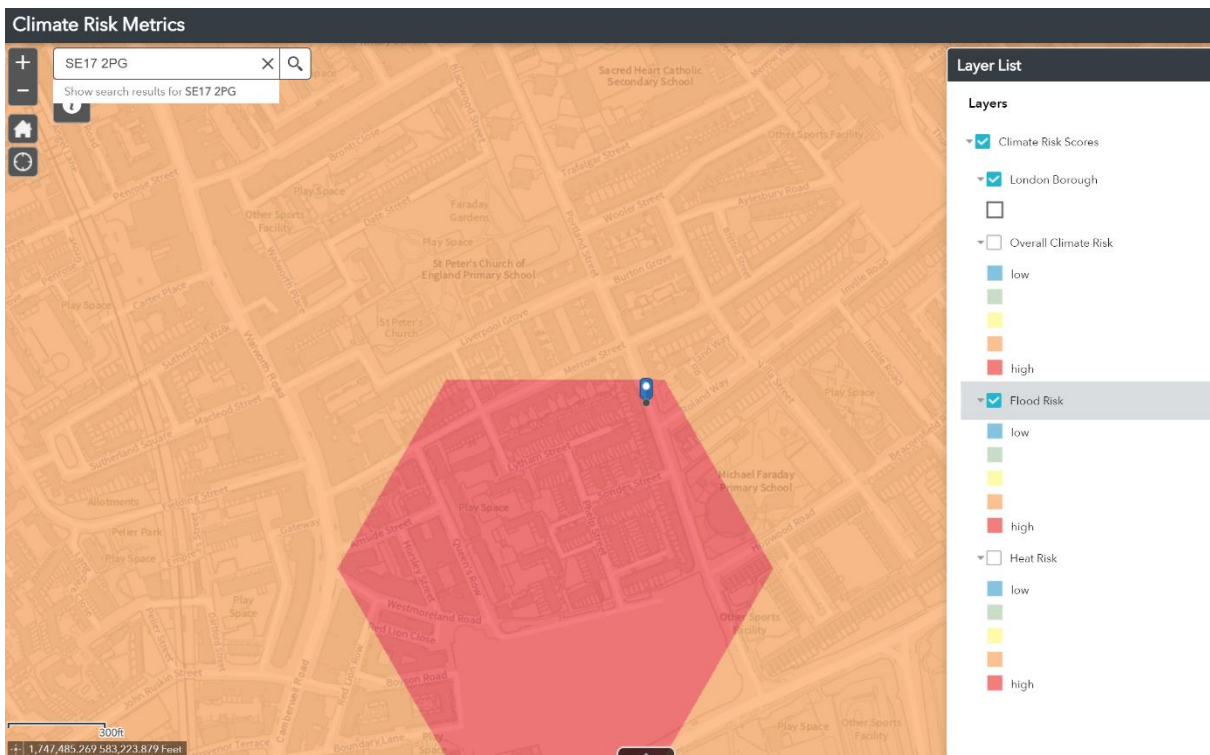
- ii. Type the postcode of your project into the search bar at the upper left of the screen and click on the search button, or hit enter.



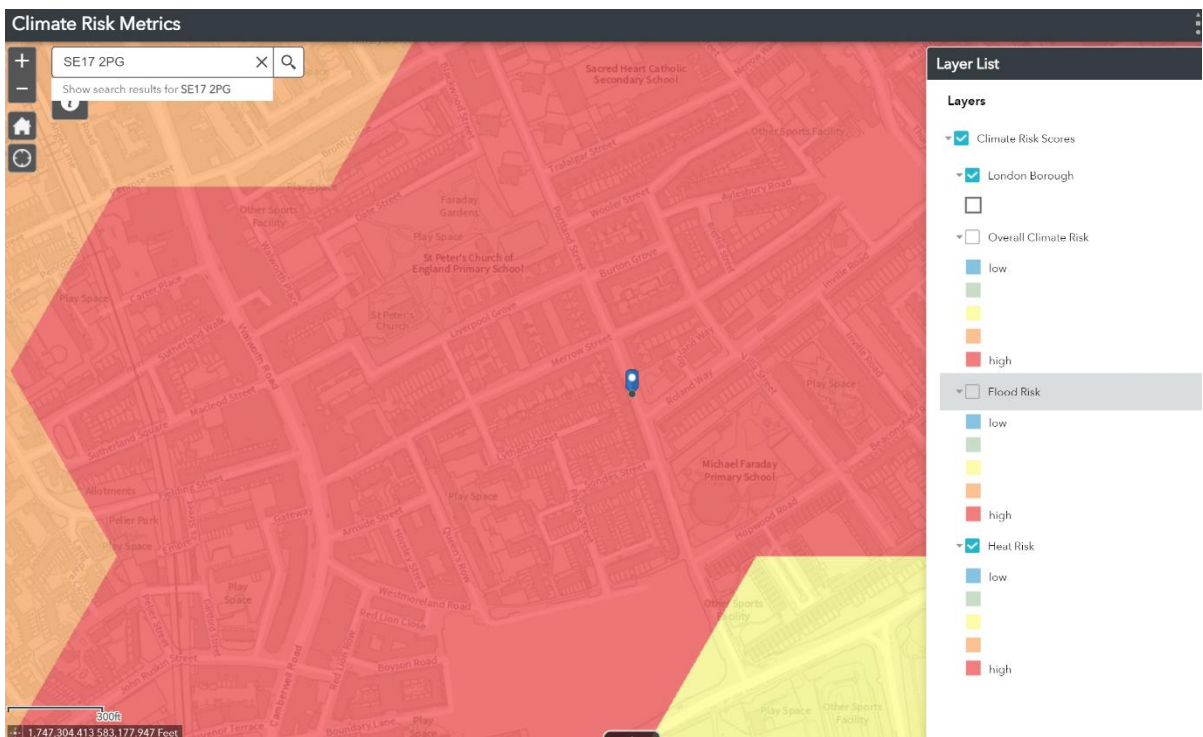
- iii. Use the Layer List at the right side of the screen to show Overall Climate Risk, Flood Risk, and Heat Risk at the postcode or borough you've selected. The map below shows Overall Climate Risk:



This map shows Flood Risk for the same location:



And this map shows Heat Risk for the same location:



Use the map to identify the climate risk in your area as evidence in support of your project, and to consider how your proposed project activities will address the risks highlighted.